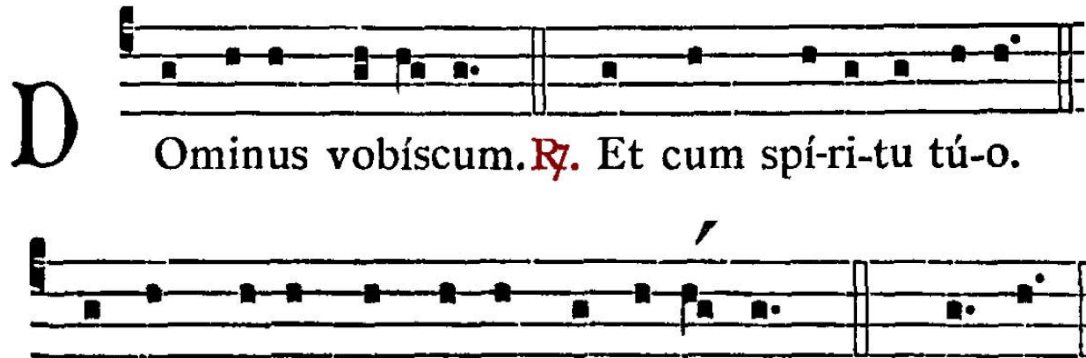


---

# DIVERSES RÉPONSES DE LA MESSE CHANTÉE

## ORAISON




**D** Ominus vobiscum. *R.* Et cum spí-ri-tu tú-o.  
per ómni-a saé-cu-la saecu-ló-rum. *R.* Amen.

The musical notation consists of two staves. The first staff begins with a large 'D' and contains the notes for 'Ominus vobiscum. R. Et cum spí-ri-tu tú-o.' The second staff continues with 'per ómni-a saé-cu-la saecu-ló-rum. R. Amen.' The 'R.' responses are marked in red in the original image.

---

## EVANGILE



**D** Ominus vobiscum. *R.* Et cum spí-ri-tu tú-o. Sequé-nti-a sán-  
cti Evangé-li-i secúndum Matthaé-um. *R.* Gló-ri-a tí-bi Dómine.

The musical notation consists of two staves. The first staff begins with a large 'D' and contains the notes for 'Ominus vobiscum. R. Et cum spí-ri-tu tú-o. Sequé-nti-a sán-' The second staff continues with 'cti Evangé-li-i secúndum Matthaé-um. R. Gló-ri-a tí-bi Dómine.' The 'R.' responses are marked in red in the original image.

## PRÉFACE SOLENNELLE

**P** ER ómni- a saécu-la saecu-ló-rum. *R.* Amen. *V.* Dóminus vo-  
biscum. *R.* Et cum spí-ri-tu tú- o. *V.* Sursum córda. *R.* Habémus ad  
Dóminum. *V.* Grá-ti- as agámus Dómino Dé- o nóstro. *R.* Dignum  
et jústum est.

## PRÉFACE - TONUS SOLEMNIOR

**P** ER ómni- a saécula saecu-ló-rum. *R.* Amen. *V.* Dóminus vo-  
biscum. *R.* Et cum spí-ri-tu tú- o. *V.* Súrsum córda. *R.* Habémus ad  
Dóminum. *V.* Grá-ti- as agámus Dómino Dé- o nóstro. *R.* Dignum  
et jústum est.

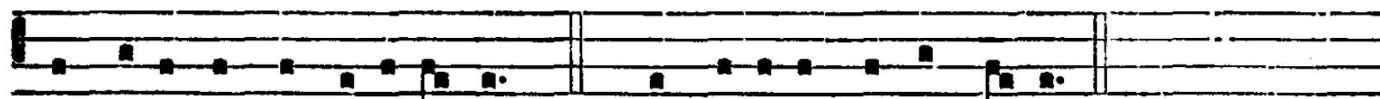
---

## PATER

**P**



ER ómni-a saécula saecu-ló-rum. *Rz.* Amen. *V.* Et ne nos

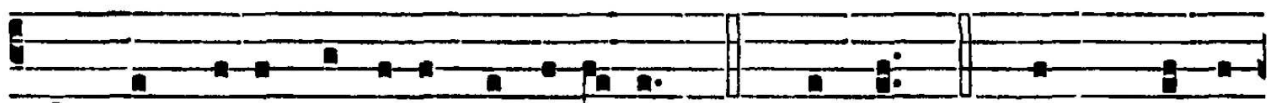


indúcas in tenta-ti-ó-nem. *Rz.* Sed líbera nos a má-lo.

---

## AGNUS DEI

**P**



ER ómni-a saécula saecu-ló-rum. *Rz.* Amen. *V.* Pax † Dómi-



ni sit † semper vobís-† cum. *Rz.* Et cum spí-ri-tu tú-o.