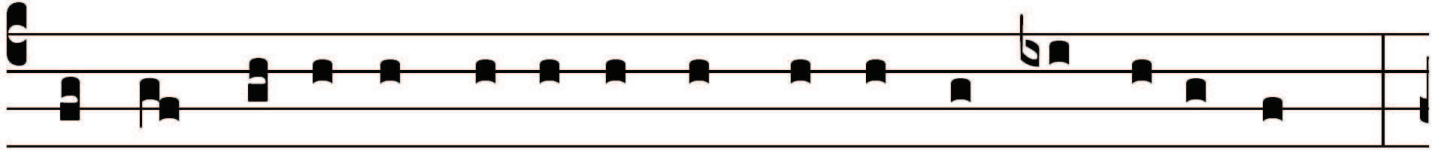




ANTIPHONA AD INTROITUM

IN. VI

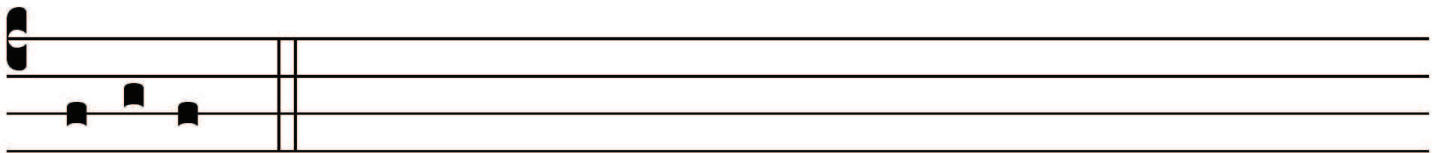
STO mi-hi * in De- um pro- tec- tó- rem, et
 in lo-cum re- fú- gi- i, ut sal- vum me fá- ci- as:
 quóni- am firmaméntum me- um, et re- fú- gi- um
 me- um es tu: et prop- ter no- men tu- um
 dux mi- hi e- ris, et e- nú- tri- es me. *Ps.*



In te Dómi-ne spe-rá-vi, non confúndar in aetérnum: *



in justí-ti-a tu-a lí-be-ra me. Gló-ri- a Patri. E u o



u a e.