



# ANTIPHONA AD INTROITUM

**D**omi-nus for-ti-túdo ple-bis su-ae, et pro-  
 téctor sa-lu-tá-ri-um Chri-sti su-i est :  
 sal-vum fac pópu-lum tu-um, Dómi-ne, et béne-  
 dic he-re-di-tá-ti tu-ae, et rege e-os  
 usque in saé-cu-lum. *Ps.* Ad te Dómi-ne clamábo,



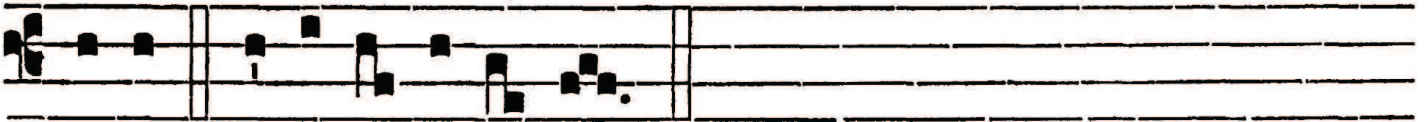
*/ / / / / A J / J A A J -*

De- us me- us ne sí- le- as a me : nequándo tá- ce- as a



*/ A / A S*

me, et assimi- lábor descendéti- bus in la- cum. Gló- ri- a



Patri. E u o u a e.