



GRADUALE

GR. V

R

E-spi-ce, Dómi-ne,

in testamén-tum

tu-um :

et á-ni-mas

páu-pe-rum

tu-ó-

rúm

ne obli-viscá-

ris in

fi-nem.

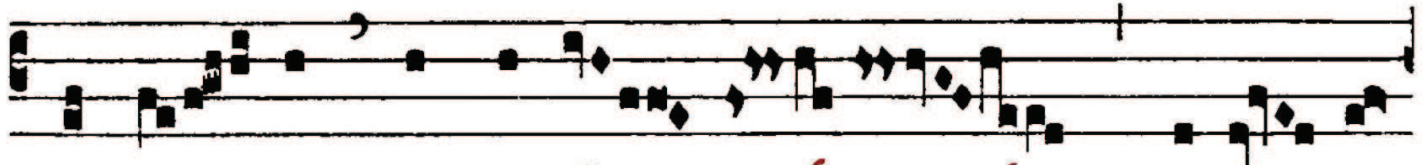
∇. Exsúrge Dómi-ne,

et iú-

di-ca



cau- sam tu- am: me-



mor e- sto oppróbri- i servó- rum



tu- ó- rum.